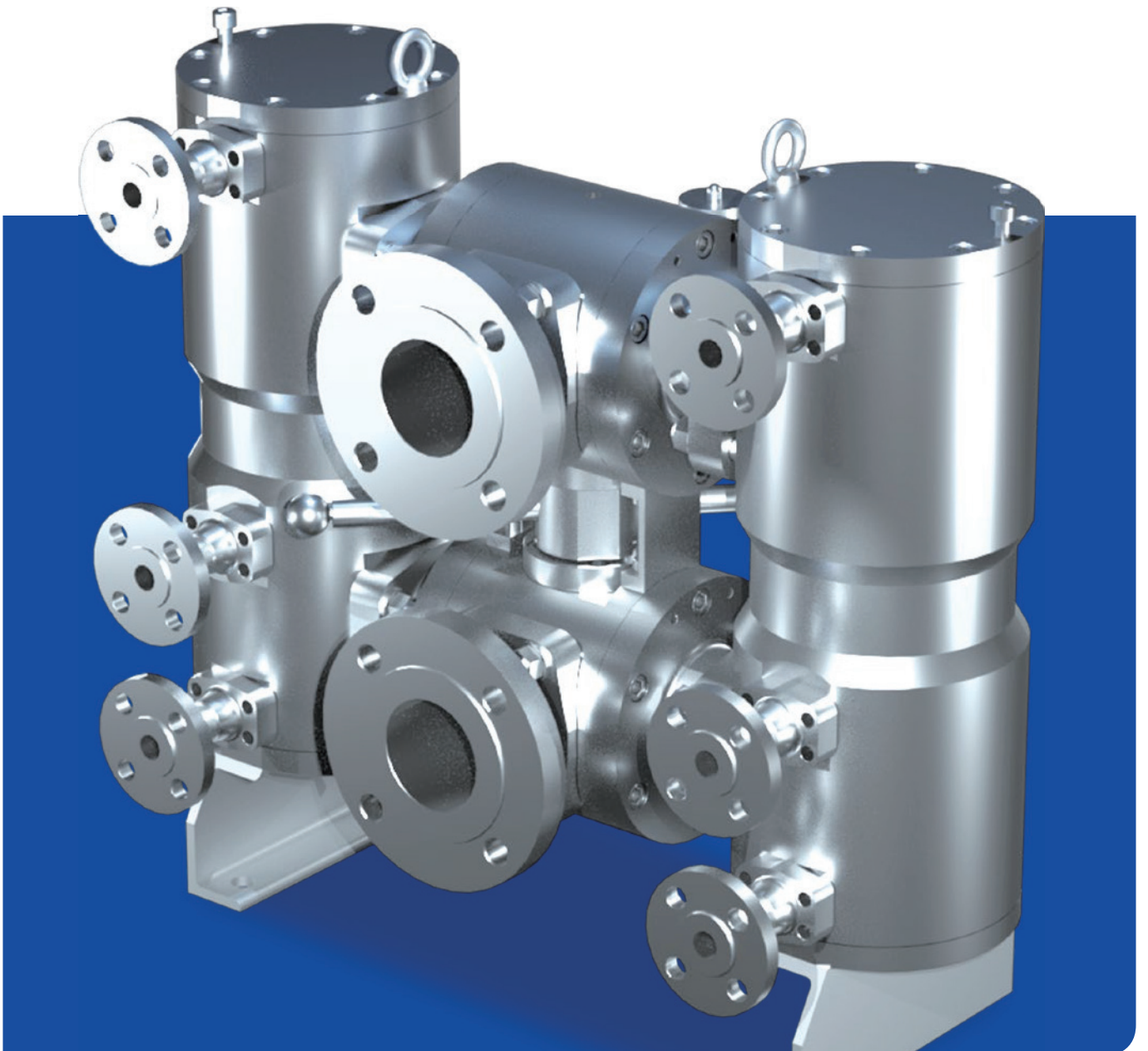
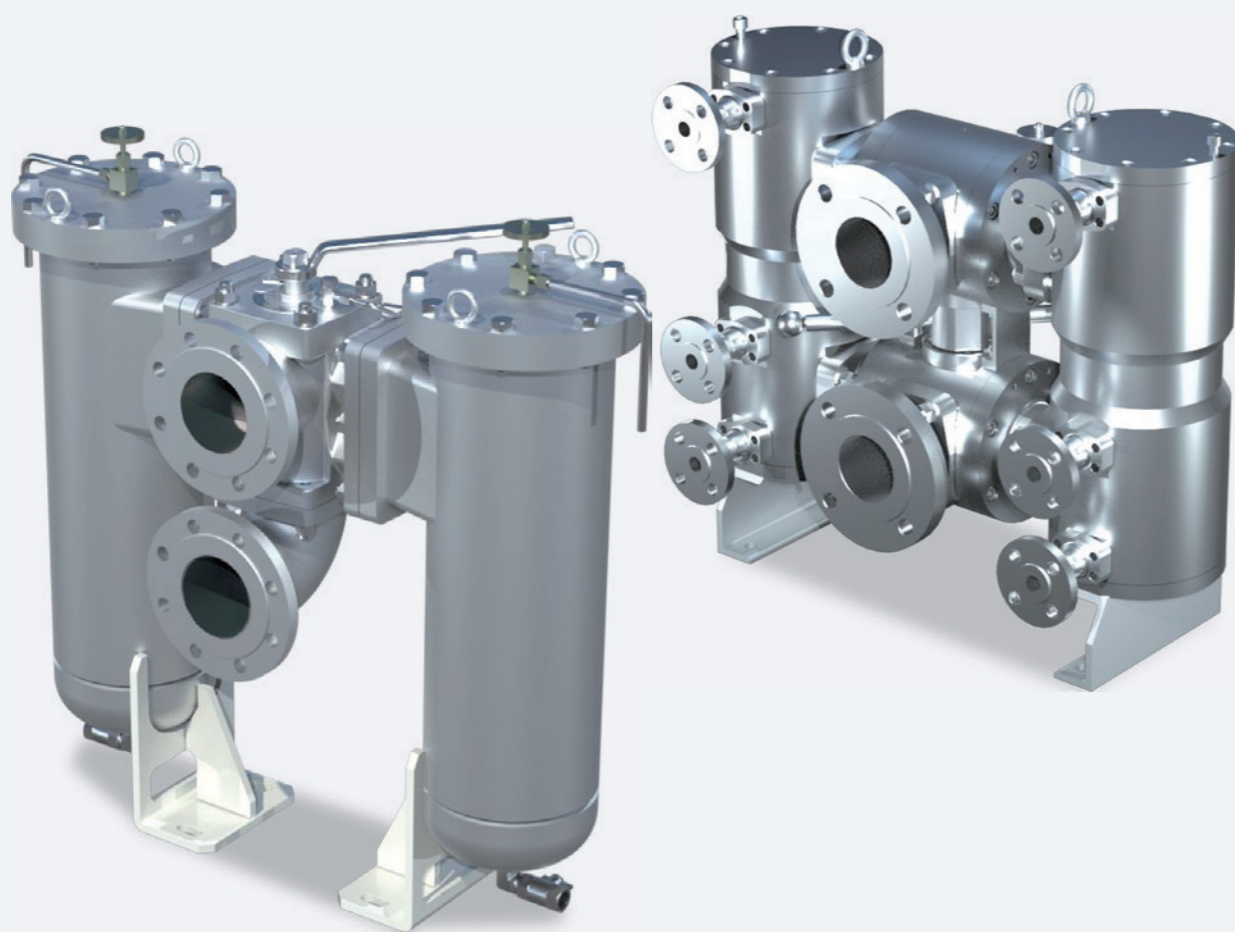


Filter & 2 Way 6 Port Valve

Create Customer Value
through Innovative System Engineering



Filter & 2Way 6 Port Valve



MnSi filter can be applied to the various fluid process such as fuel oil, lubricating oil, cutting oil and coolant in marine and industrial application. It is developed by MnSi's accumulated technical knowhow. Longstanding casting housing and customized filtering fineness is available with approval of classification such as ASEM, API Explosion Proof, CE and Marine Class.

Benefits

- Enlarged surface of filter element can make extended lifetime and maintenance cleaning period.
- Easy replacement of the element

Quality

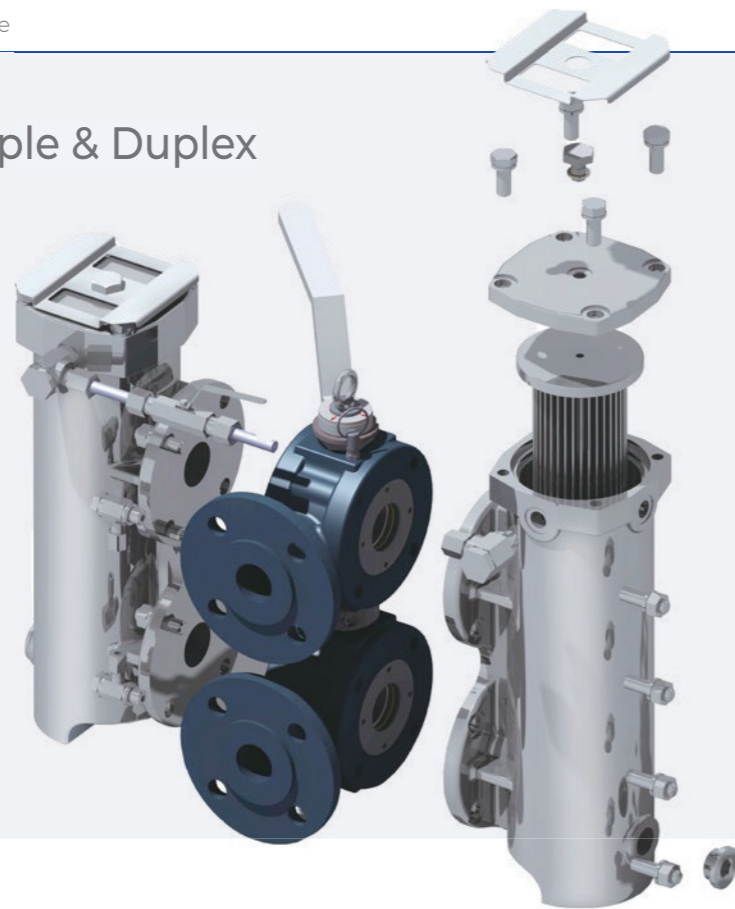
- Excellent performance with safety in various customized specification

Application

- Diesel engine fuel oil / Diesel engine, turbine and compressor lubricating oil / Miller, driller and lathe cutting oil / Chemical process / Sea water, raw water etc in Power and Marine Application



Filter Simple & Duplex



Specification

Body	
Design Code	ASME VIII Division 1, U-STAMP, PED, API614
Material	FCD400
Connections	DN25 to DN100
Flow Rate	2,000 l/h ~25,000 l/h
Design Temperature	Up to 150°C or Customizing
Design Pressure	Up to 20 bar or Customizing
Element	
Material	SUS304 / 316L / PAPER
Fineness	25, 34, 50, 60 micron
Diff.pressure(clean)	0.2 bar
Design Temperature	Up to 150°C or Customizing
Collapse Pressure	Up to 10 bar
Other Application	
Change Over System	Manual
Differential Pressure	Indicator / Transmitter
Nozzle Size	1"~6"
Fluid Application	
Liquid	Water / Lub. Oil / Fuel Oil / Chemical
Gas & Etc.	Customizing

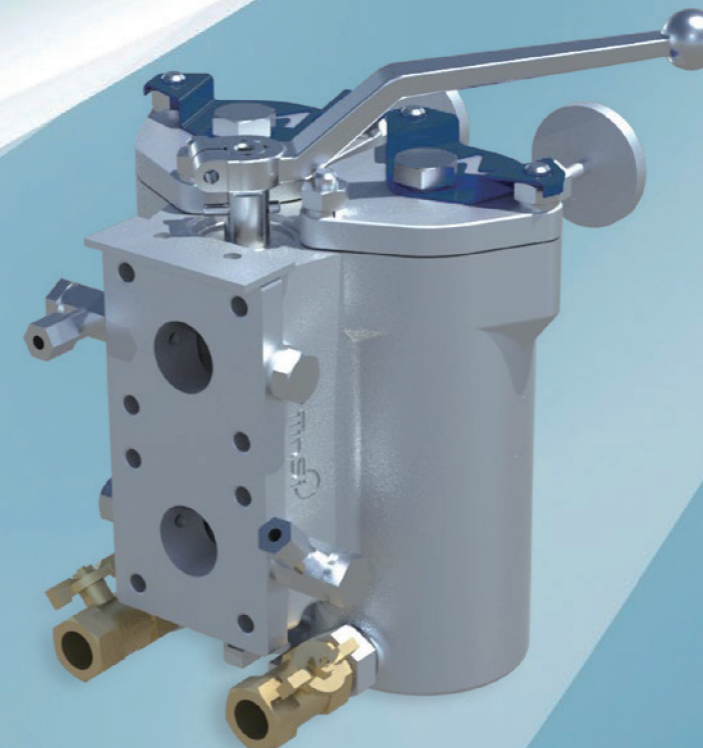
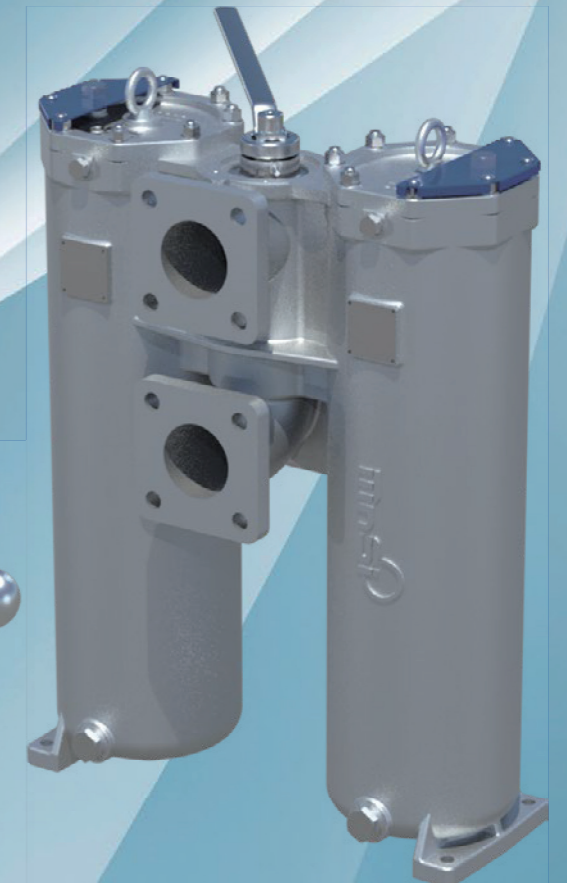
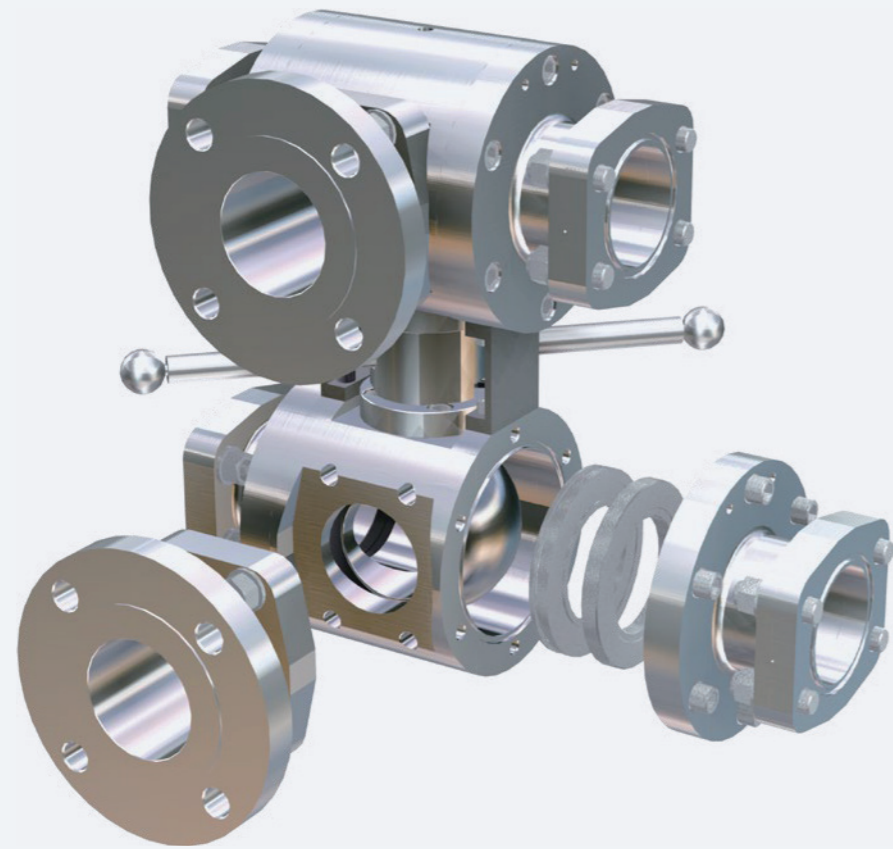
Filter Simple & Duplex



Specification

Body	
Design Code	ASME VIII Division 1, U-STAMP, PED, API614
Material	ASTM or Equivalent
Connections	DIN / ANSI / JIS / KS / all other STD
Flow Rate	Up to 1,000m³/h or Customizing
Design Temperature	Up to 200°C or Customizing
Design Pressure	Up to 200 bar or Customizing
Element	
Material	SUS304 / 316L / PAPER
Fineness	Over all Fineness
Collapse Pressure	Up to 10 bar
Design Temperature	Up to 150°C or Customizing
Design Pressure	Customizing
Other Application	
Change Over System	Manual / Electric / Hydraulic Actuator
Differential Pressure	Indicator / Switch / Transmitter
Nozzle Size	1/2" ~ 24"
Fluid Application	
Liquid	Water / Lub. Oil / Fuel Oil / Chemical
Gas & Etc.	Customizing

Valve 2 Way 6 Port



Specification

Body	
Design Code	API614 / ASME B16.5
Material	ASTM or Equivalent
Connections	DIN / ANSI / JIS / KS / all other STD
Design Temperature	Customizing
Design Pressure	Up to 200 bar of Equivalent
Seat Material	PTFE / Silicon of Customizing
Ball Material	A182 F316L or A351 CF3M

Other Application	
Change Over	Manual / Electric / Hydraulic Actuator



Scan QR Code
with a Smartphone

www.mnsi.co.kr



MnSi Co., Ltd.

138, Jayumuyeok 5-gil, Masanhoewon-gu,
Changwon-si, Gyeongsangnam-do, Republic of Korea

T +82-55-237-0606

F +82-55-237-3030

E service-sales@mnsi.co.kr

W www.mnsi.co.kr